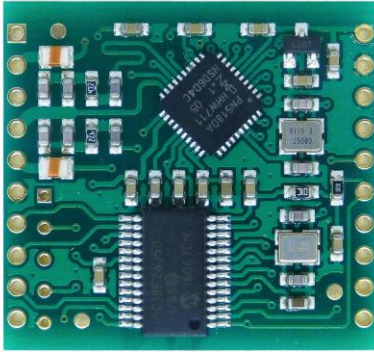


## COMPACT-ISO 13.56 MHz multi-ISO module



The multi-ISO COMPACT module is a modern RFID module, supporting ISO14443A, ISO15693 and NFC, designed for use in RFID transmit and receive applications. Data is outputted over a UART or USB interface.

This COMPACT-ISO requires an external antenna and external power supply.

COMPACT-ISO is developed with special attention for smallest dimensions and highest technical integration flexibility (e.g.: 3,3 Vdc to 5,0 Vdc).

This extremely small-sized 13.56 MHz RFID module can thus easily be integrated in different applications such as time & attendance terminals, POS systems, vending machines, handheld and desktop readers, ...

### Technical specifications :

#### General specifications :

- Supported RFID technologies :
  - ISO14443A, such as :
    - CTC 4096-MP410 (Legic Advant)
    - ATC 4096-MP311 (Legic Advant)
    - Mifare Classic S50 & S70
    - Mifare Desfire EV1
    - Mifare Ultralight (NXP Mifare Ultralight C) SCC-MFULI
  - ISO15693, such as :
    - I Code SLI
    - ATC 1024-MP100 (Legic Advant)
  - NFC, such as :
    - NFC/NATG 203 (ISO18092)
  - Sony Felica (ISO18092)
  - Note : above list is not limiting but just examples.
- Dimensions : 30,48 x 25,40 x 3,81 mm
- Weight : +/- 4 g
- Operating temperature : -20°C to +75°C
- RoHS compliant

#### Power supply & consumption :

- Requires external power supply
- Power supply : 3,3 to 5,0 Vdc
- Power consumption :
  - 60 mA typ
  - 500 mA max

#### HF specifications :

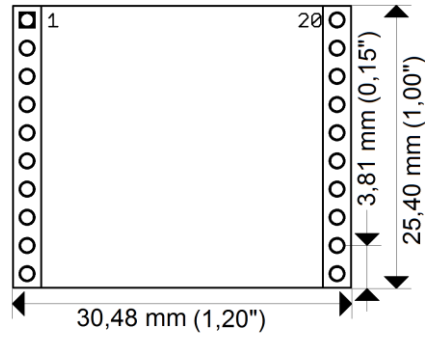
- Frequency : 13.56 MHz
- RF power :
  - Typ : 0,3 W (dynamic power regulation)
  - Max : 1,25 W
- Max transmission current : 250 mA
- Antenna : external antenna required

#### Antenna requirements :

The external antenna should meet the following specifications :

- Impedance :
  - Min : 20  $\Omega$
  - Typ : 50  $\Omega$
- Standing wave ratio (SWR) : < 2
- Quality factor Q :  $\leq 30$   
(Q = 16 for fast data speed with ISO14443A)

## Connections :



Pin	Function	Pin	Function
1	n.c.	11	UART RX
2	TX1 ANT	12	UART TX
3	U <sub>B</sub>	13	n.c.
4	GND ANT	14	n.c.
5	TX2 ANT	15	RESET
6	GND	16	n.c.
7	USB D-	17	n.c.
8	USB D+	18	n.c.
9	n.c.	19	GND
10	n.c.	20	U <sub>B</sub>